



FREMO



Fremo proudly presents  
the newest collection.

Discover avant-garde minimal window architecture. One of the slimmest window frames in the world. Created to expand your view.

#### Installation

##### Quick assembly and easy installation

FREMO window systems are designed by professionals who are experienced in European Systems for 10 years and manufactured well in Asia, giving you the best standards in high-end fittings and accessories that meet the challenges of modern architecture at an affordable price.

#### Design

##### Thin, minimalist & large opening to the outdoor

INVISI by Fremo is one of the slimmest frame in the world. The width of the vertical profile is 23 mm, while the maximum surface area is only limited to the glass dimension and maximum weight of 800 kg per panel. Each vent can reach 5 meter height and 2,5 meter width.

#### Sliding System

##### Simple smooth slide with infinite adaptability

The sliding windows run on at least eight of High – Density PolyEthylene (or HDPE) plastic wheels on each side of each track. This advanced multiple wheels can slide 800 kgs, create super smooth traction with the sash, as well as quick and easy maintenance.

#### Materials

##### A wide range of colours and materials

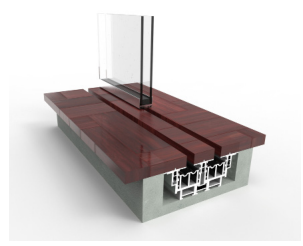
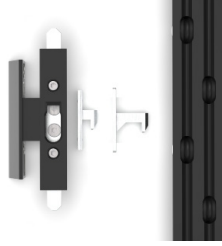
The structure is made of the highest quality aluminium alloy. You may choose any powder coating colors to harmonize with your architectural design.

## Seeing the unseen

Fremo is the art of seeing the invisible, a thin line between you and the nature. Designed and built based in European window system, Fremo emphasizes in creating the minimal windows, maximizing the connectivity of the indoor and outdoor area.

Our system explores the structural properties of glass, enabling the execution of large glazed areas with the use of vertical, minimal aluminium profiles, resulting in luxury atmosphere.





Invisible U-Profile to keep the look minimal



Embedded sills & rails on 4 sides



Multiple lock for safety



Invisible rail for minimal look

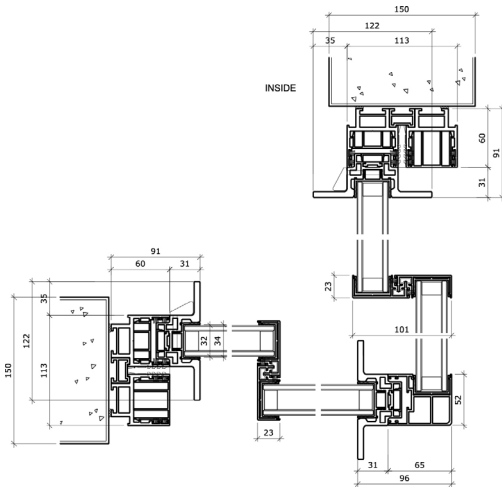


Hidden drainage systems with adjustable base



State-of-the-art corner sliding mechanism













# Swing Window

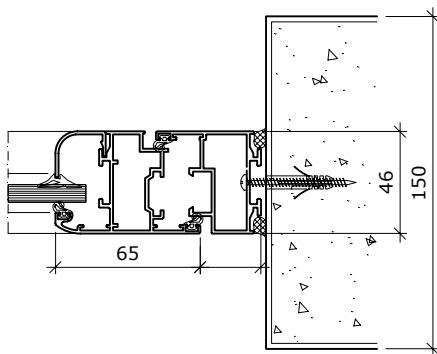
Slim design with 46 mm basic profile. Our aluminium hinge with stainless-steel inner tube is designed to provide flat surfaced frame-sash connection.



01



02



03



04

- 01 Isometric view
- 02 Hinge
- 03 Horizontal section
- 04 Handle

Details and Configuration

60 kg maximum weight capacity per panel on hinges.

Compatible with Fremo Contemporary Sliders and Door.

System designed with wind and water tightness.

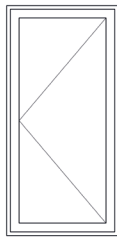
Compatible for curved window design with lattice.

Single or double glass infill.

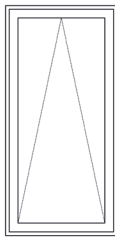
Possible window configurations, as follow:



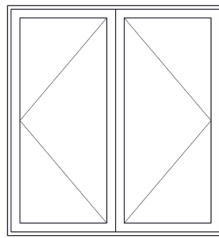
05



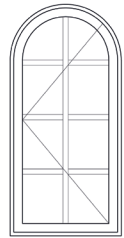
06



07



08



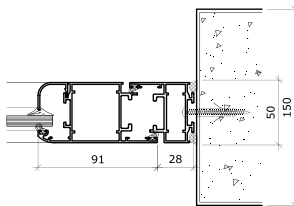
09

- 05 Fixed frame
- 06 One leaf inward/outward swing window
- 07 Top hung
- 08 Two leaves inward/outward swing window
- 09 Curved one leaf swing window with lattice

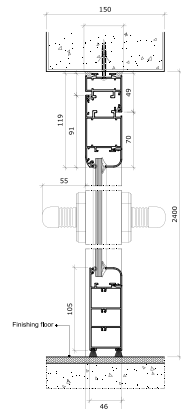


## Swing Door

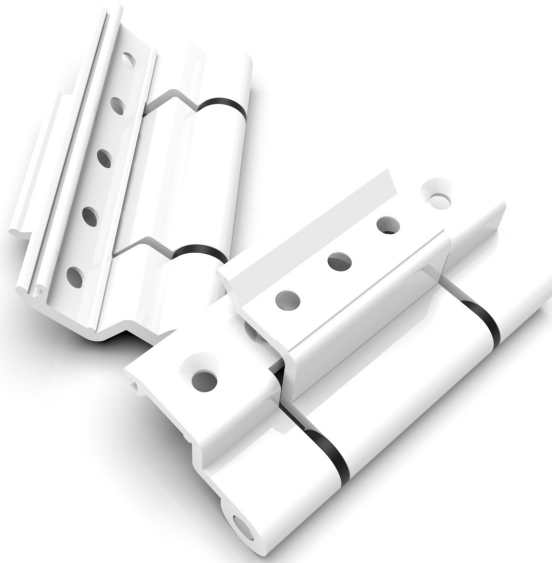
Slim design with 50 mm basic profile.



01

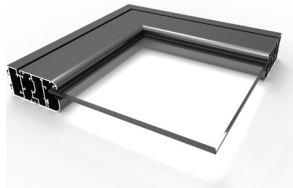


02



03

Our aluminium hinge with stainless-steel inner tube is designed to provide flat surfaced frame-sash connection.



04

Designed with modern lever handle and lock set.



05

- 01 Horizontal section
- 02 Vertical section
- 03 Isometric view
- 04 Hinge
- 05 Handle

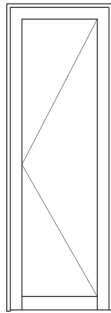
Details and Configuration

Dimension limit based on maximum weight capacity of 80 kg per panel (up to H 3200 x W 1000).

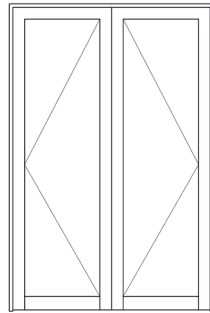
Compatible for curved door design with lattice.

Compatible with Fremo Contemporary Sliders and Window.

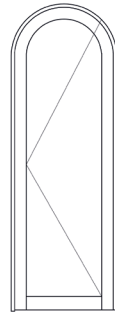
Door configurations



01



02

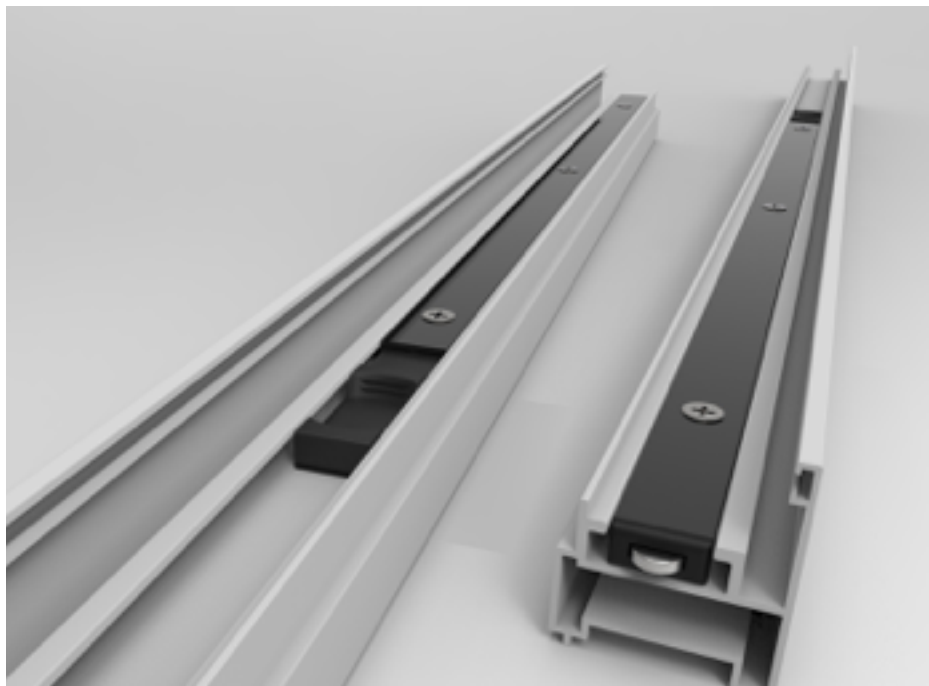


03

- 01 One leaf swing door
- 02 Two leaves swing door
- 03 One leaf swing door

## Security

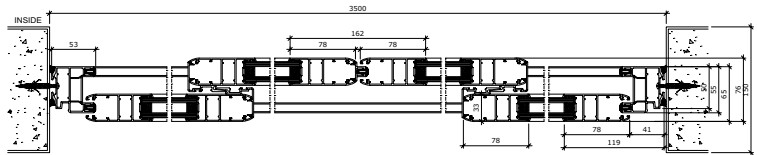
Double punching lock mechanism for burglar protection.





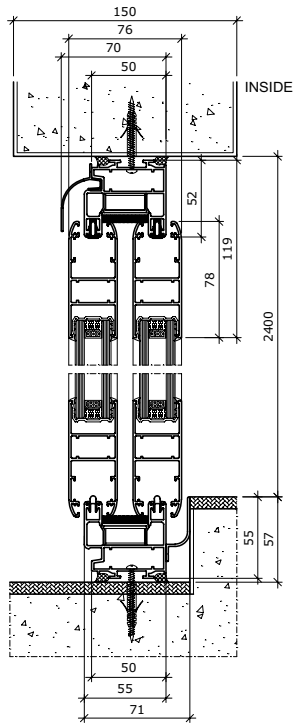
## Slider

A simple and sturdy design for your sliding doors and windows. Basic profile depth of 55 cm for 2 tracks sliders and 98 cm for 3 tracks sliders that will fit your 15 cm wall depth. Hidden drainage system for clean and sleek look.



01





02

## Security

Depending on sizes, our lock is designed with 1 to 2 points lock, ensuring your home is safe from force opening and burglar.

- 01 Horizontal section
- 02 Vertical section

Details and Configuration

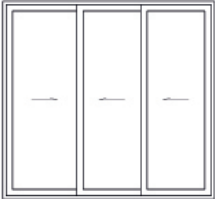
Hidden rollers are placed inside the bottom frame, providing clean look on track surfaces.

120 kg maximum weight capacity per sash.

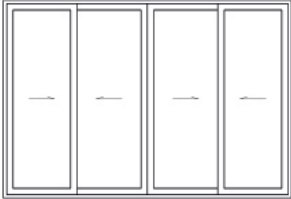
Sliders configuration



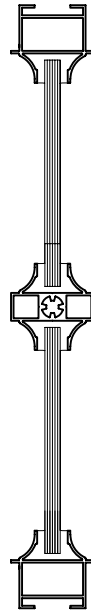
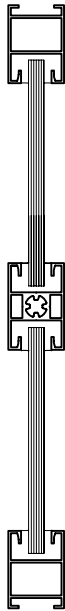
01



02



03



04

Two types of lattice for swing door, swing window and slider.

- 01 Two tracks sliders
- 02 Three tracks sliders
- 03 Two tracks four leaves sliders
- 04 Two types of lattice

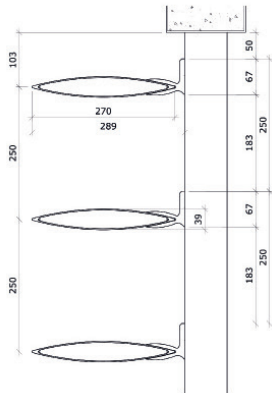


## Sunblade

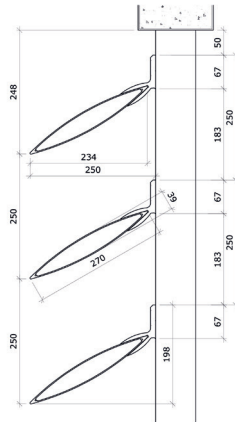
Extruded aluminium blade as sun shader and façade solutions.  
28 mm aluminium blade. Vertical, horizontal, and angled installations  
are available.



- 01 Sunblade at 0 degree
- 02 Sunblade at 35 degrees



01



02





